

Using your DS series printer driver for the Macintosh computer

After installing your driver, you can use the DS40, DS80 or RX1 to print from your computer.

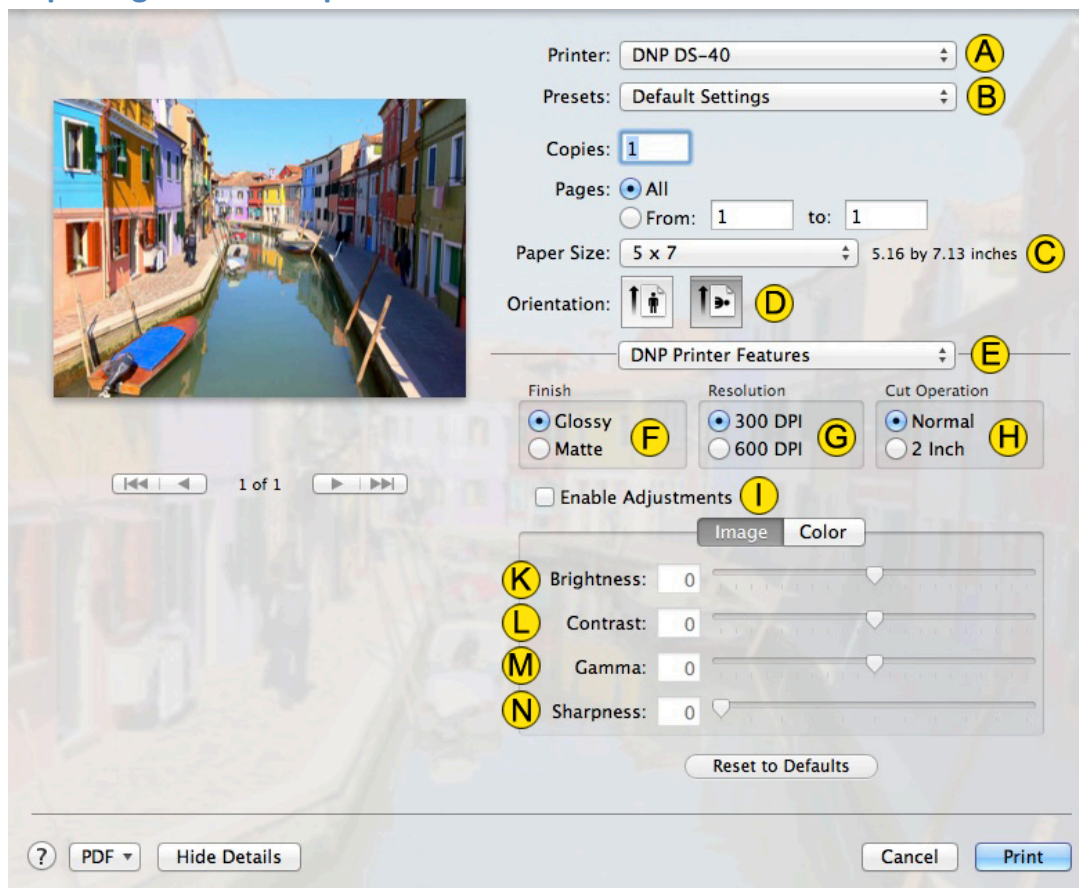


Note: the printer options screen may change slightly depending on the program from which you are printing. Graphic design programs like *Photoshop* or *Illustrator* may have extra settings which are not included in the examples below.



Attention: the examples that follow show settings for the DS80 printer. The DS40 and RX1 printer control panels are the same, but will use different sizes for the paper.

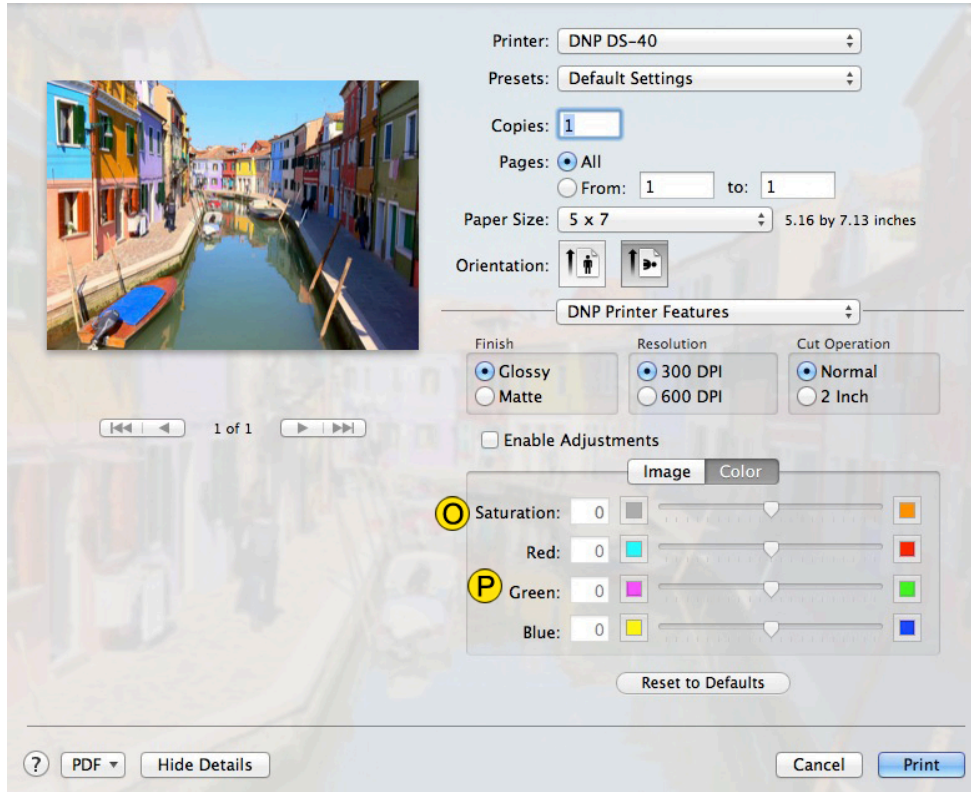
Exploring the control panel



Letter	Description	Letter	Description
A	Select Printer*	H	Cut Mode
B	Preset Selection	I	Enable Adjustments: Expert Mode
C	Paper Size	K	Brightness
D	Paper Orientation	L	Contrast
E	Printer Settings	M	Gamma
F	Overcoat type: glossy/matte	N	Sharpness
G	Resolution: 300 DPI recommended		

*selecting a different printer, such as the DS80 or RX1, will change some of the options (paper size) accordingly.

By clicking on the **Color** button, you can change the controls from **Image** to controls to Color controls.

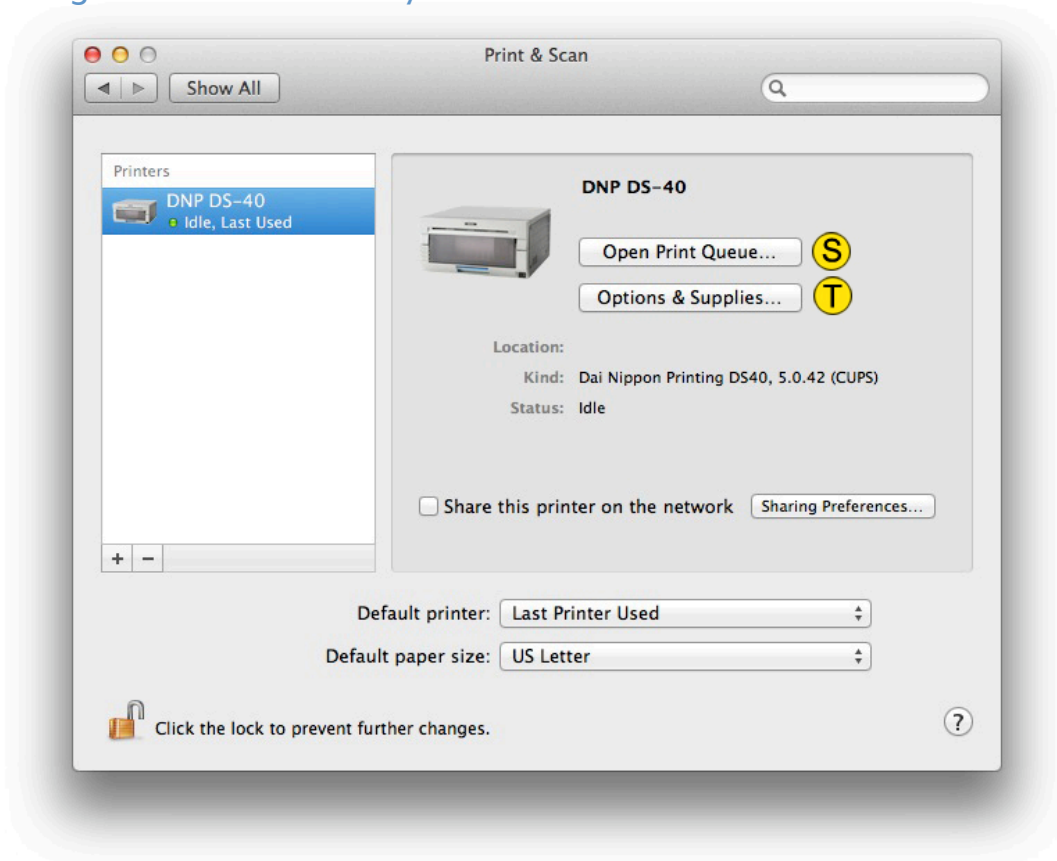


Letter	Description	Letter	Description
O	Saturation levels	P	Color Correction (Red/Green/Blue)

The screenshot shows a printer control interface. On the left is a preview of a colorful canal scene. On the right, settings are displayed: Printer (DNP DS-40), Presets (Default Settings), Copies (1), Pages (All), Paper Size (5 x 7, 5.16 by 7.13 inches), and Orientation (Portrait). Below these is a 'Supply Levels' section with a progress bar for 'DS40 5x7 Media (350 of 200)'. A note states 'Supply levels shown are approximate.' At the bottom are navigation buttons (1 of 1), a help icon, a PDF button, a 'Hide Details' button, and 'Cancel' and 'Print' buttons.

Letter	Description	Letter	Description
Q	Supply Levels	R	Ribbon Remaining Estimate

Accessing the Panels from the System Preferences > Print & Scan window



Clicking on **Options & Supplies** brings up another supply window.

Letter	Description	Letter	Description
S	Open the Print Queue Window	T	Options & Supplies
U	Approximate Ribbon Prints Remaining		

